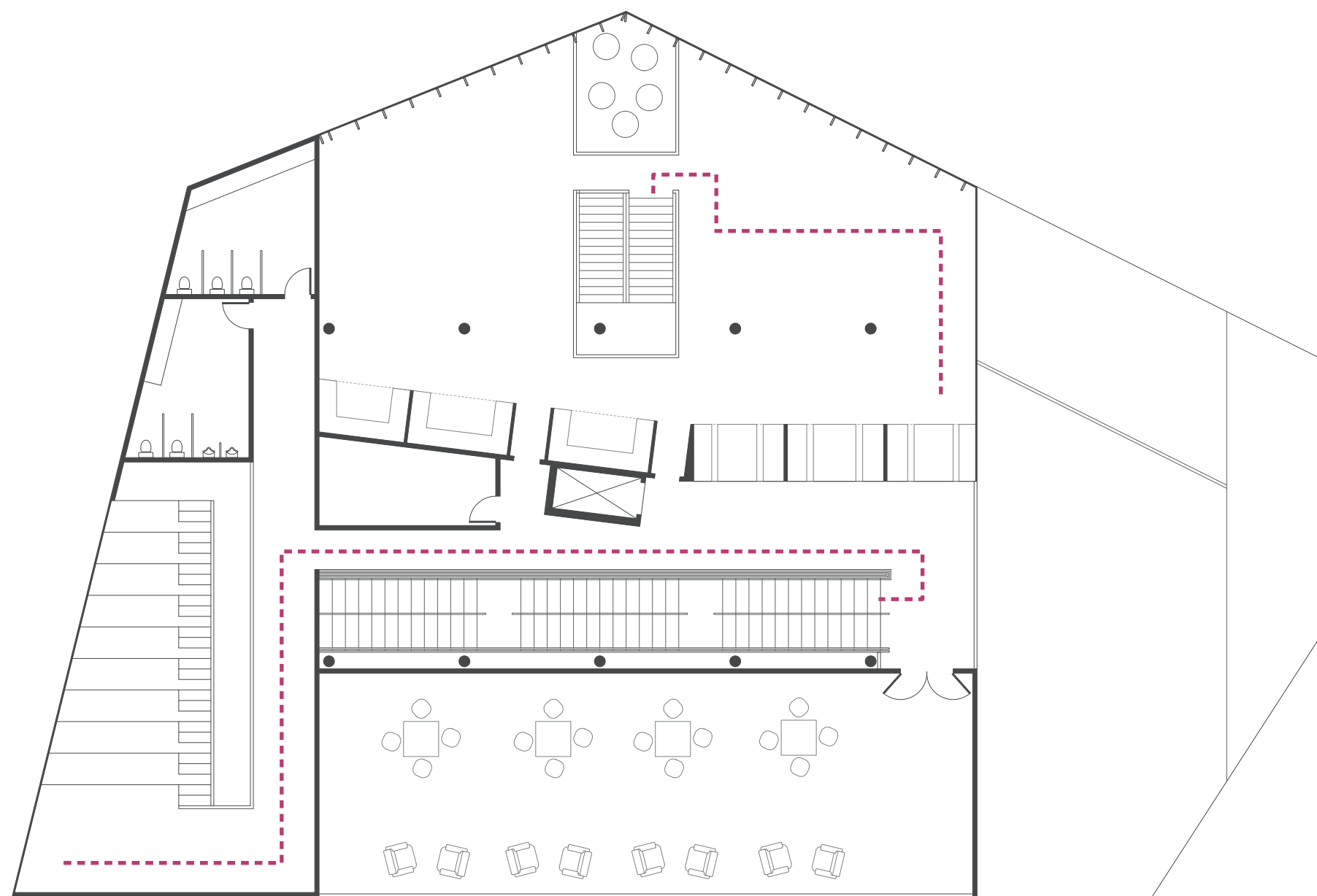


THIRD FLOOR PLAN
SCALE 1/16" = 1'



FOURTH FLOOR PLAN
SCALE 1/16" = 1'

CODE REVIEW

IBC 1015.1 & IBC 1019.1: According to Table 1015.1 Spaces With One Means Of Egress and the occupancy load of the floors of the building, each floor needs 2 means of egress. The new means of egress exits for the entire building now complies with Table 1015.1 and Table 1019.1.

IBC 1016.1: Exits are so located on each story such that the length of travel does not exceed distances according to Table 1016.1 Exit Access Travel Distance [200 ft for occupancies A, F1, S1, B: 300 ft for S2].

IBC 1017.1: According to Table 1017.1, the corridor on the first floor has a required fire-resistance rating of at least 1 hour [see code annotation 3].

OCCUPANCY LOADS [OCCUPIABLE AREAS ONLY]

- 13. OFFICE SPACE 1: B, BUSINESS
AREA: 1326 sf OCCUPANCY: 14
- 14. MEETING ROOMS: B, BUSINESS
AREA: 1581sf OCCUPANCY: 15.81

MEANS OF EGRESS

ASSIGNMENT 4A
PAGE: 2 OF 3

48-215 MATERIALS & ASSEMBLY
SPRING 2017

INSTRUCTOR: DAMIANI

SELENA ZHEN