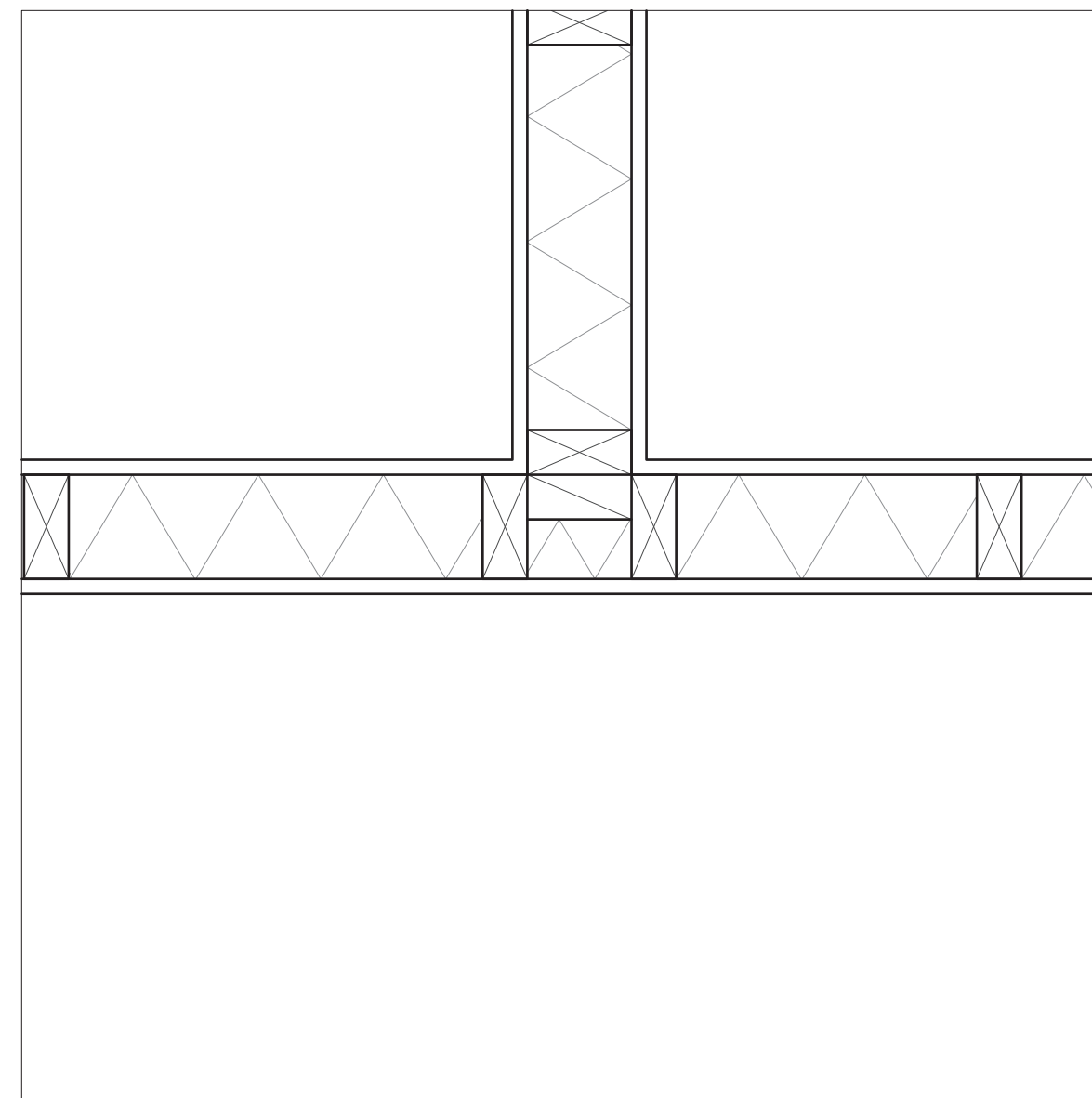
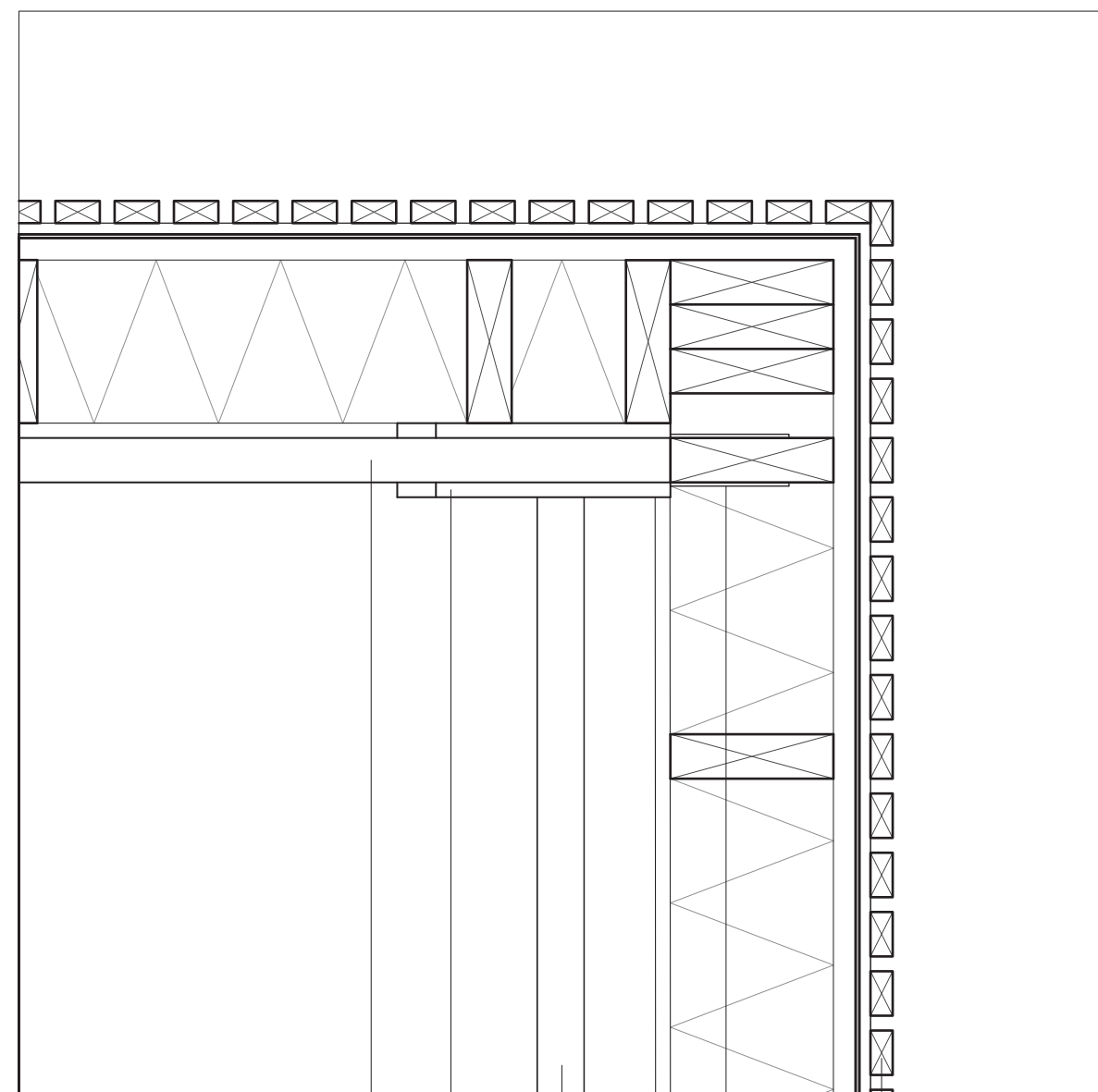


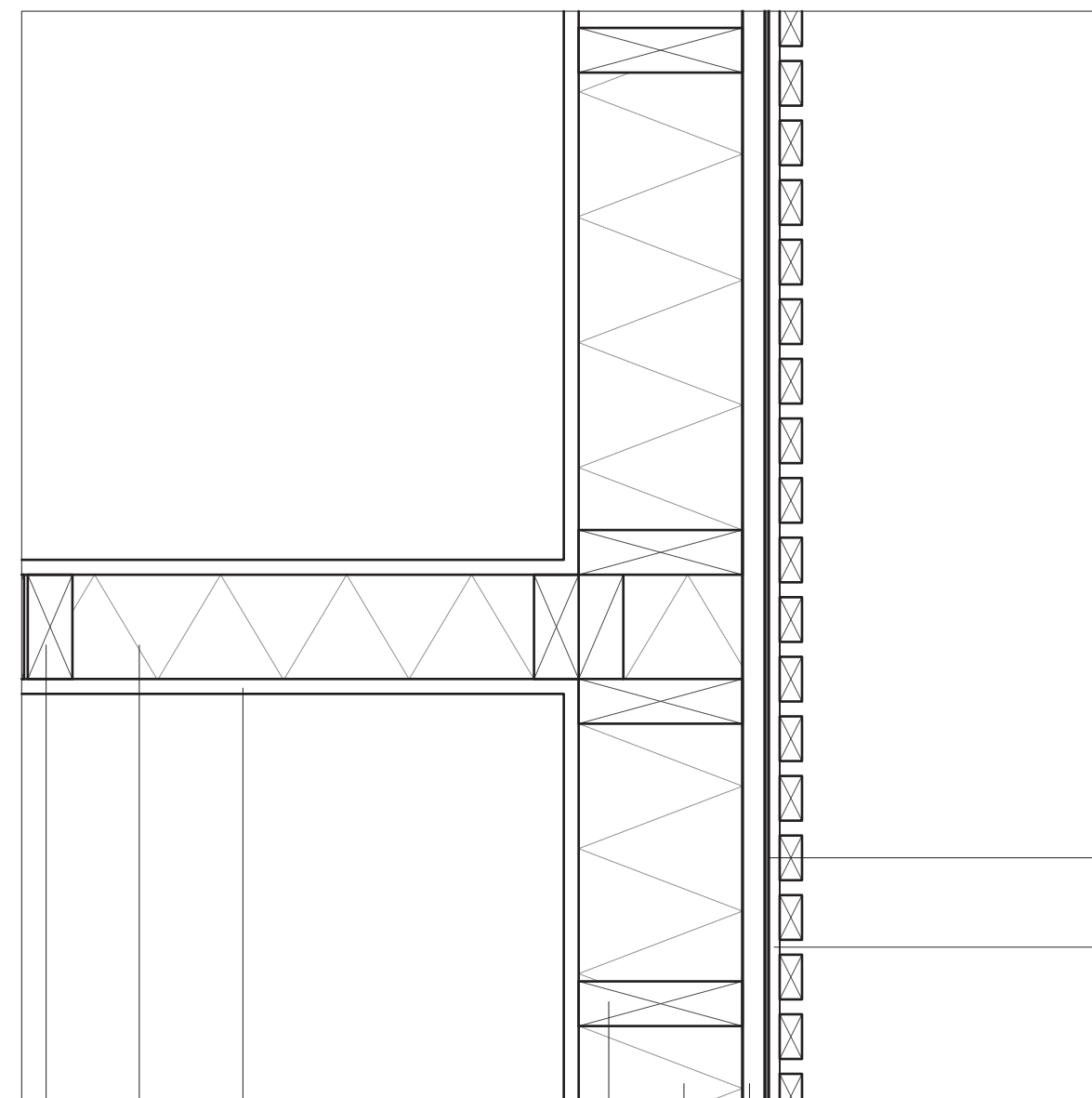
INTERIOR CORNER DETAIL 1



INTERIOR CORNER DETAIL 2



EXTERIOR CORNER DETAIL 1



EXTERIOR CORNER DETAIL 2

- CONSTRUCTION MATERIAL KEY**
1. 3.5"x1.5" STUD (16" O.C.)
  2. 3.5" CLOSED CELL INSULATION
  3. 0.5" DRYWALL
  4. DOOR FRAME
  5. 7.25"x1.5" TRUSS CHORDS AND WEB
  6. 0.5" OSB GUSSET
  7. 3.5"x1.5" CEILING FRAME
  8. TRUSS HANGAR
  9. 1.5"x0.75" LARCH SLAT
  10. 3.5"x1.5" STUD (16" O.C.)
  11. 3.5" CLOSED CELL INSULATION
  12. 0.5" DRYWALL
  13. 5.5"x1.5" STUD (16" O.C.)
  14. 5.5" CLOSED CELL INSULATION
  15. 0.75" EXTERIOR GRADE PLYWOOD
  16. WATERPROOF MEMBRANE
  17. LARCH SLAT RAIN SCREEN CLIP

**WOOD FRAMING**

**ASSIGNMENT 3**  
**PAGE: 3 OF 3**

**48-215 MATERIALS & ASSEMBLY**  
**SPRING 2017**

**INSTRUCTOR: DAMIANI**

**SELENA ZHEN**

5 6 7 8 9

10 11 12 13 14 15

16

17